

## Application description

### **IS-SACI a tool for the management and assurance of the quality in property development.**

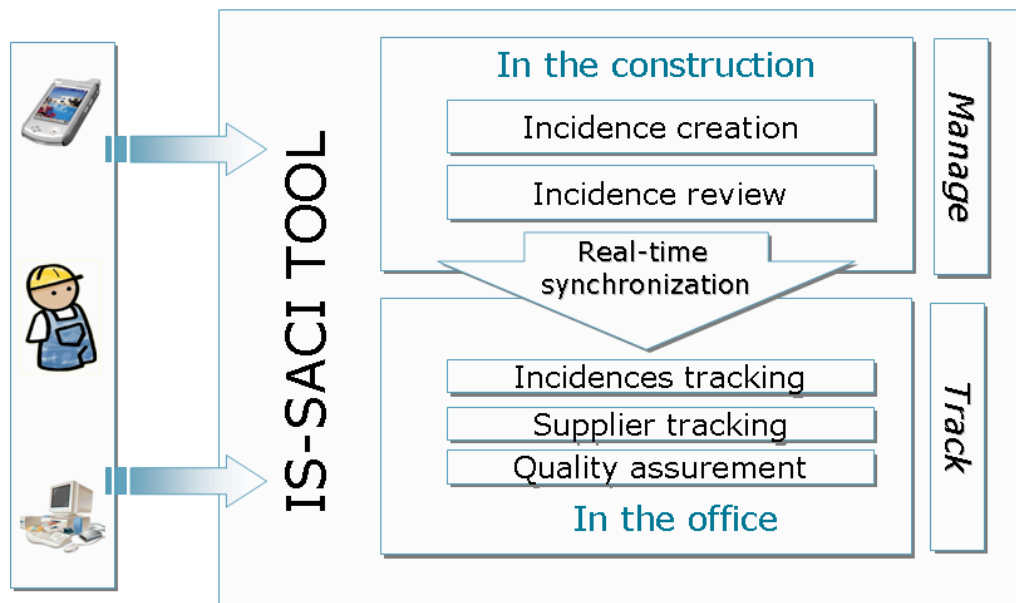
IS-SACI is a tool designed for the **management and assurance of the quality in property development**. This service is created specifically to real state agencies which are compromised with the quality assurance of their projects, and the benefits associated, such as the response time reduction of incidences and derivate cost from this activity.

The application covers the necessities of the quality department of a real state agency, controlling the life-cycle of the issues detected in the property development, and has the following characteristics:

- ▣ Universal access: from PDA and PC.
- ▣ Flexible and intelligent.
- ▣ Distributed architecture.

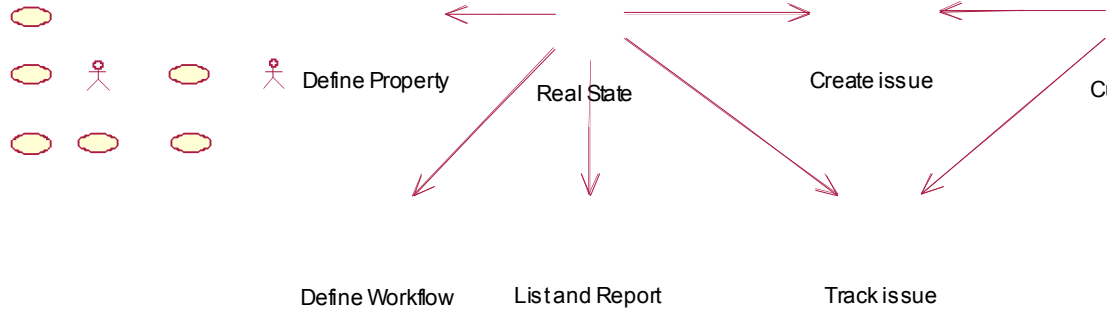
In order to improve this phase of the construction, the main goals of the application are:

- ▣ Minimisation of the cost and resources associated to the quality assurance.
- ▣ To improve the customer satisfaction minimising construction times.
- ▣ To improve the productivity managing the incidences.



The functionalities of the application can be described as UML diagrams:

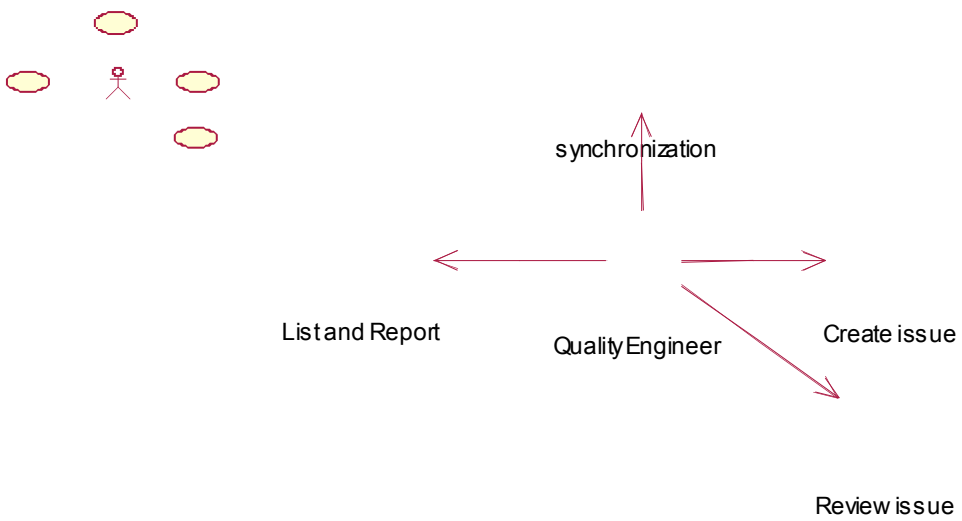
1) From the real state and customer role:



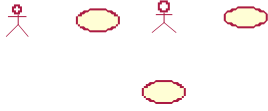
2) From the supplier role:



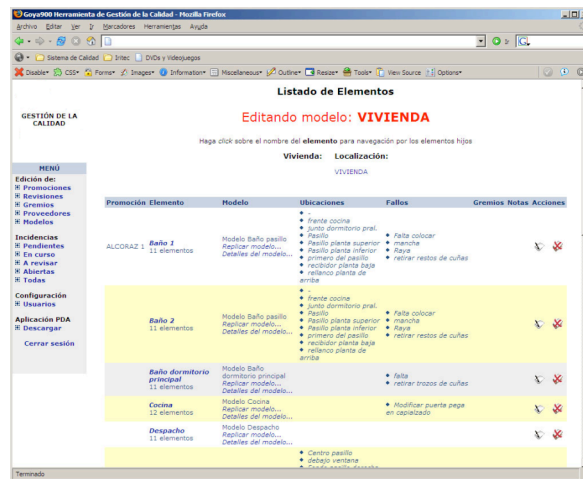
3) From the quality engineer role:



4) From interaction between real state agencies / suppliers:



Some screenshots of the application:



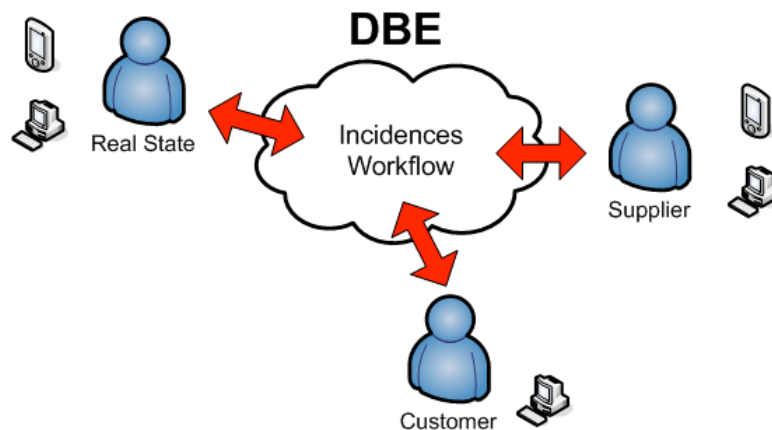
## Scenarios:

There are two main scenarios:

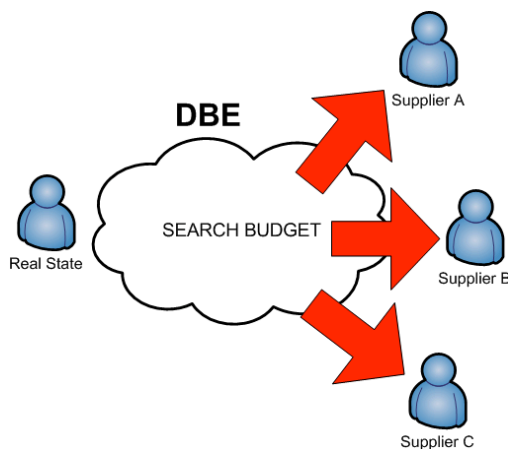
### 1) Incidence Workflow:

In this scenario, the actors use the tool to share the information associated about the incidences. There is a workflow between the different roles, and basic workflow should be:

1. A customer (with a PC) creates an incidence.
2. Supplier validates the customer's incidence or creates a new one (with a PC or a PDA)
3. Supplier solves the incidence.
4. Real state validates the repair done by the supplier.
5. If customer created the incidence, he validates too the repair.



### 2) Budget Search:



In this scenario, the suppliers announces their services, and a real state can use the application to search which suppliers are to accomplish the different tasks.

When the suppliers are selected, the real state can get a budget for the construction.